

The Right System Configuration for Every Facility

Kidde ECS Series...

Flexible Protection for Small and Medium-Sized Applications

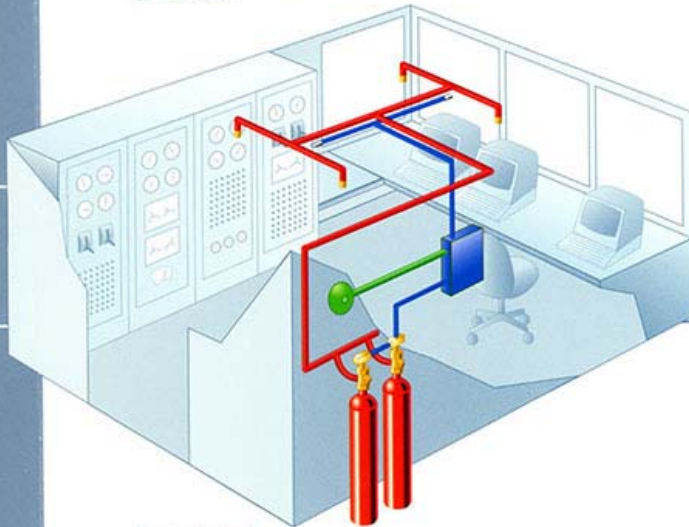
The Kidde ECS Series FM-200 System is an engineered system computer-designed to protect a specific enclosure.

Advantages

- Faster reacting than water-based systems (seconds as opposed to minutes)
- Small floor space requirement (smaller footprint than inerting system)
- Flexible location of agent storage cylinders.

Typical Applications:

- Data processing centers
- Process control rooms
- Clean manufacturing areas
- Bank vaults
- Simulators
- Battery backup rooms.



Design Criteria

Kidde FM-200 systems are recommended for fire protection of facilities where one or more of the following conditions are involved:

The value of the facilities contents (such as a museum) or the importance of the facility to a company's business continuity (for example, a data processing center) requires a fire suppression system that can react in seconds.

Water sprinkler systems are not available, or if present, may damage the contents of the facility to be protected or pose an electrical safety problem for fire fighters.

Kidde ADS Series

Ultimate Performance for Larger Applications*

* Especially Resulting of Existing Halon 1301 Installations

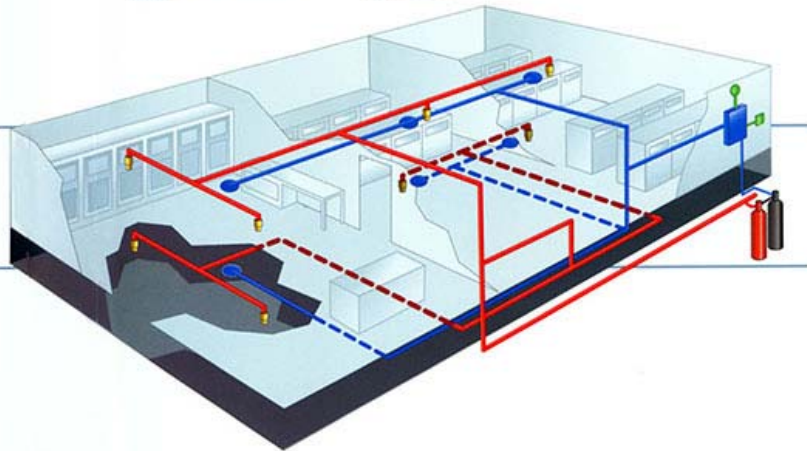
The Kidde ADS Series FM-200 System is an advanced system innovation developed by Kidde engineers to provide economic protection for larger enclosures requiring longer agent flow distances.

Advantages

- Virtual "drop-in" replacement for existing halon installations (uses existing piping, changes limited to replacement of agent storage cylinder and nozzles)
- Increased agent flow rates and distances provide better coverage for larger hazard areas
- Smaller piping diameter results in installation cost savings
- Ultimate design flexibility provides more economical protection in many applications

Typical Applications:

- Replacement of existing Halon 1301 systems
- Telecommunications facilities
- Internet hosting sites
- Recording studios
- Larger manufacturing complexes



People occupy the facility to be protected (a process control center is a typical application)

The use of a clean fire suppression agent is required to keep downtime to a minimum (as in an automated plant)

There is a limited amount of storage space available for the fire suppression system agent containers. There is a limited amount of storage space available for the fire suppression system agent containers.