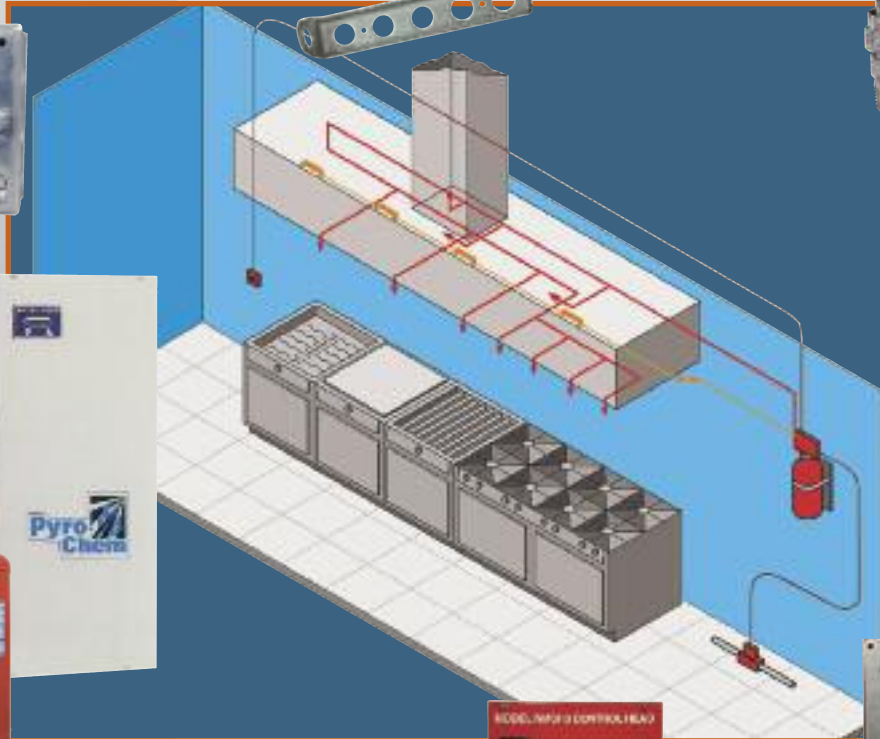


*Detection Brackets and Fusible Links --
A variety of temperature ratings allow for
customized detection options*

*Pull Station --
Allows manual actuation at a
safe distance from the hazard*

*Chrome Nozzles and Caps --
Less to choose from means less inventory
to manage and greater flexibility – also
compliments your kitchen design*



*Flexible Conduit --
Easy installation.
Replaces rigid conduit
between the control
head and pull station
and/or control head
and gas valve*



*PCL 160, 300, 460 and 600 Cylinders --
Increased Agent Capacity
– more volume and flow points*

*Optional 304-grade
stainless steel enclosure --
Encases the agent cylinder and
discourages tampering*



*Control Heads --
Easy to install. Multiple designs
activated by a fusible link, thermal
detector or manual pull station*



*Gas Shut Off Valves --
Electrical or mechanical designs
automatically cut off fuel supply
to hazard area*